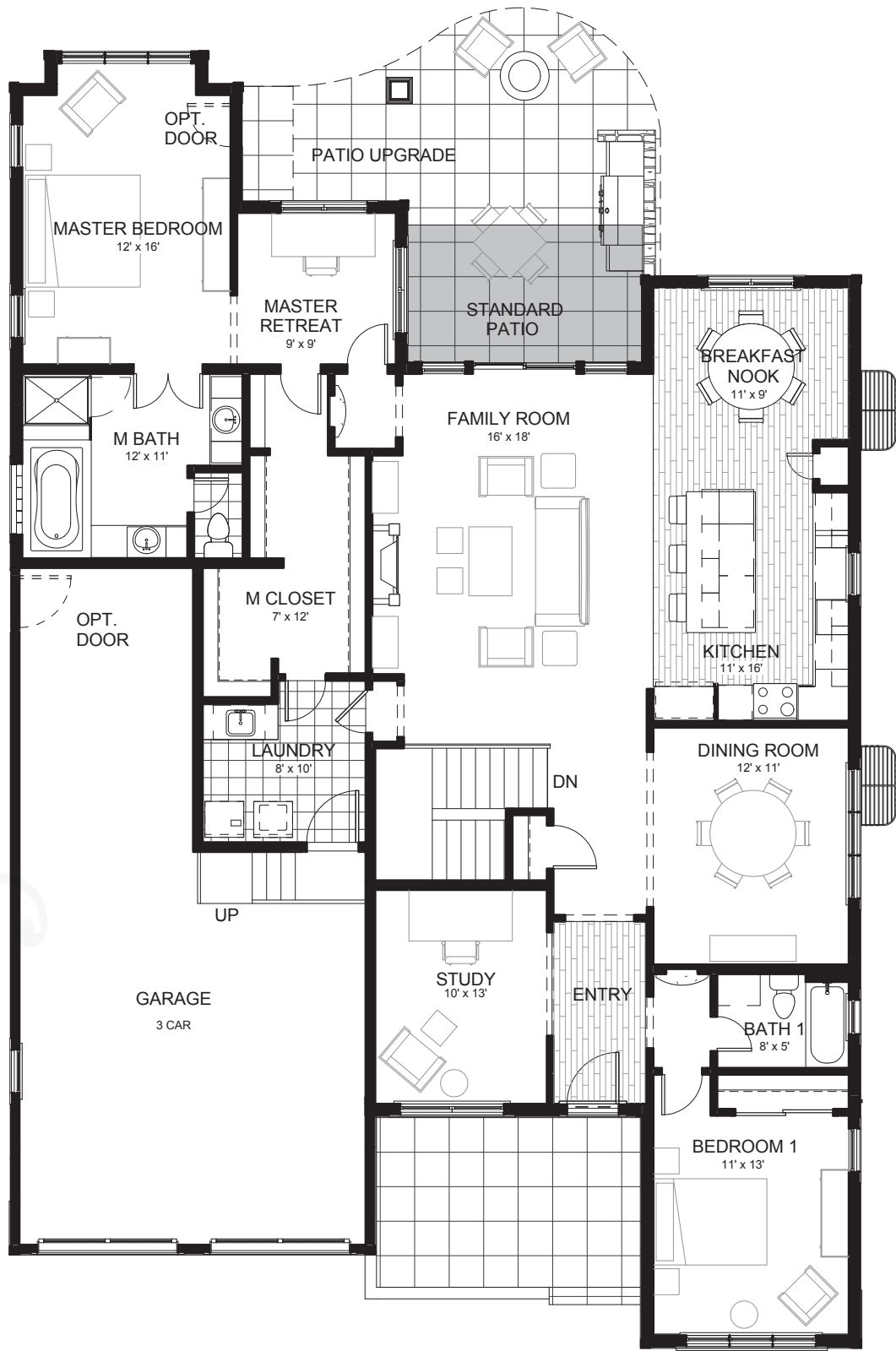


*Villa Verde*  
by Esprit Homes

*Villa Rosa*  
Plan 504

2,192 Square Feet  
2 Bedrooms, Study, 2 Baths

See Sales Consultant for Elevation B  
floor plan changes.



An eco-friendly community of lifestyle homes.

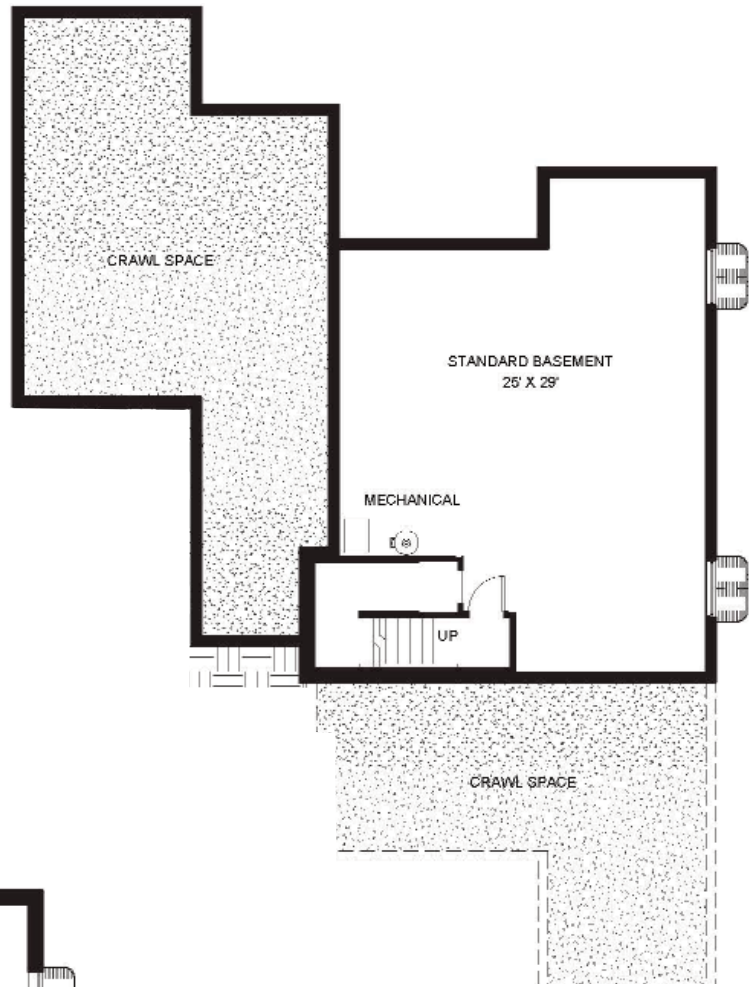


10182 Brisleridge Street / Parker, CO 80134  
303-805-3970 / VisitVillaVerde.com

Prices, floor plans, standards features, square footages and related information are subject to change without prior notice. Drawings shown herein are not to scale. Square footages and dimensions are approximate, and individual units may vary. Square footages taken from architectural plans. No reproductions or other use of these plans may be made without the express written consent of the seller. Exterior wall conditions vary – see overall plans.

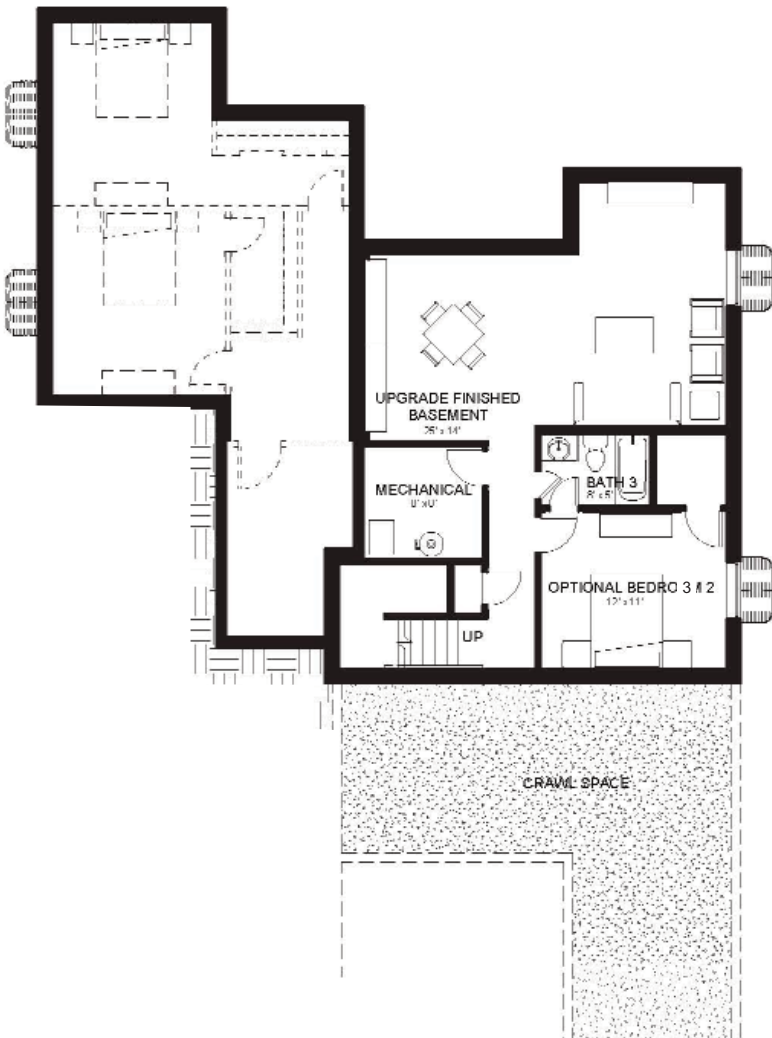


*Standard Partial Unfinished Basement*  
821 Square Feet

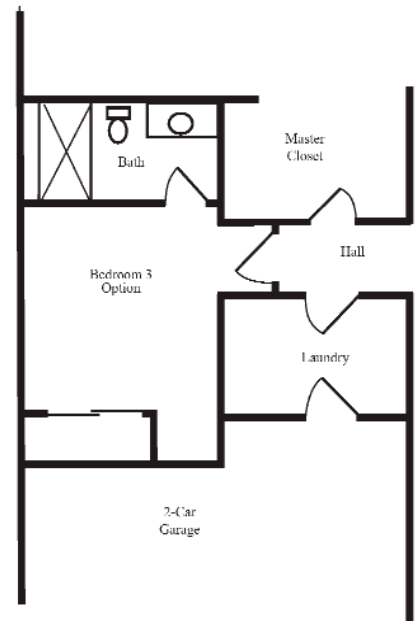


*Partial Basement Finish Option*  
911 Square Feet

*Full Basement Finish Option*  
1,635 Square Feet



- 3



*Third Bedroom Main level option*  
198 Square Feet