

Villa d'Este

Ranch

Plan 501

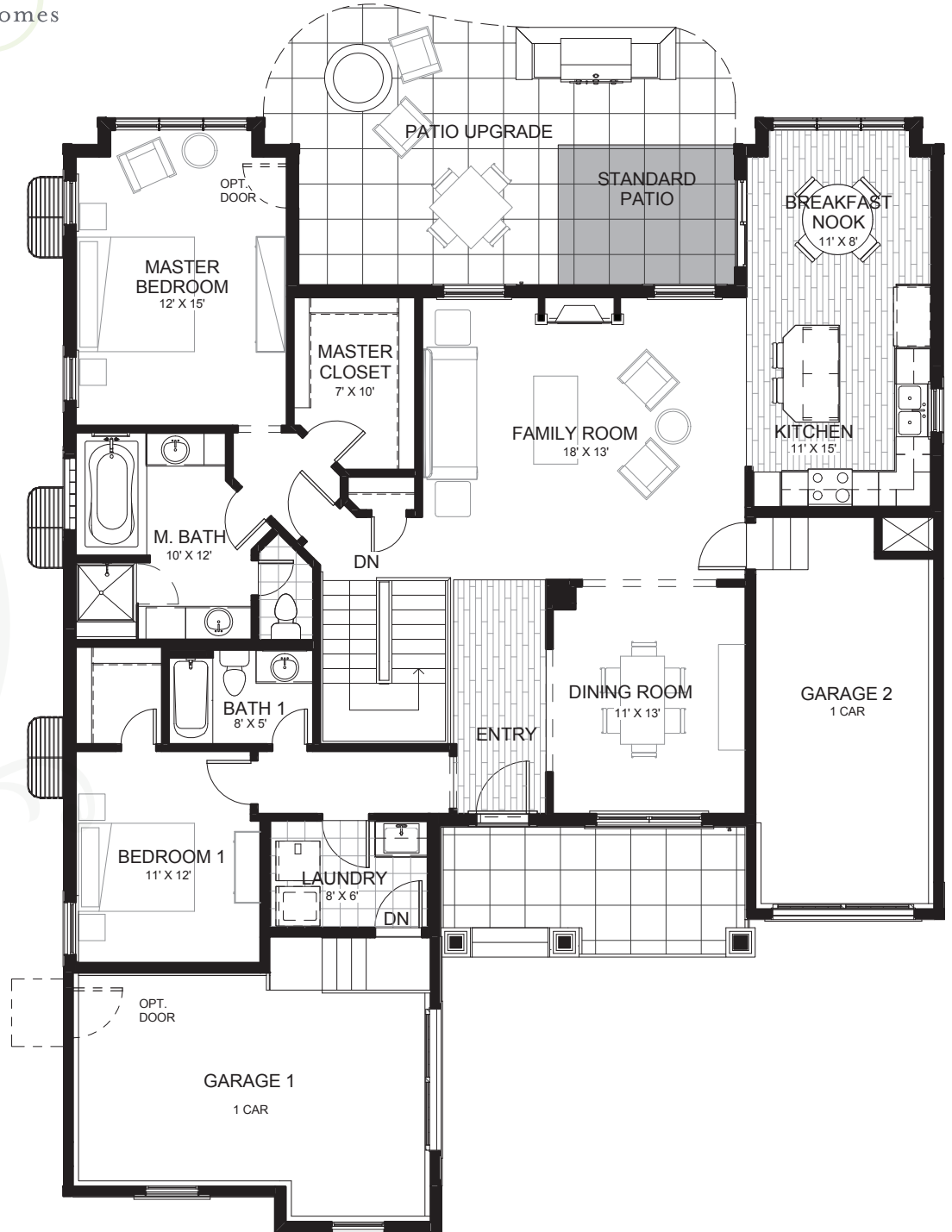
1,706 Square Feet

2 Bedrooms, 2 Baths

Villa d'Este

Two story. See reverse side.

See Sales Consultant for Elevation B floor plan changes.



An eco-friendly community of lifestyle homes.

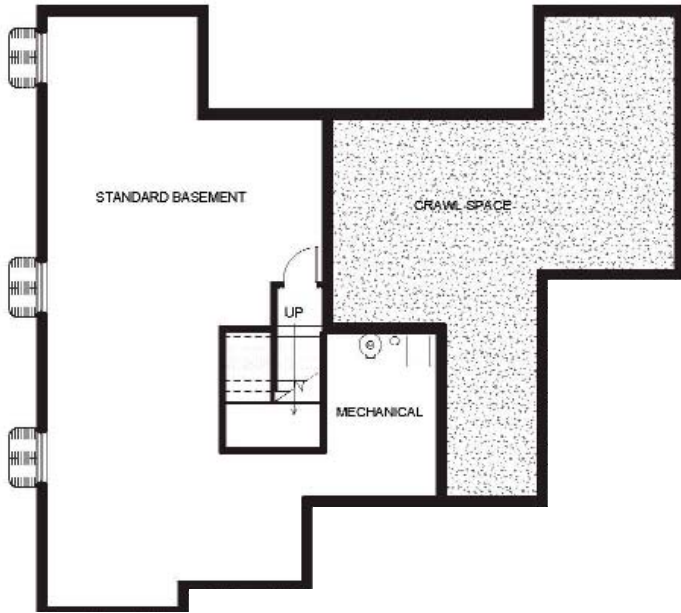


10182 Brisleridge Street / Parker, CO 80134
303-805-3970 / VisitVillaVerde.com



Prices, floor plans, standards features, square footages and related information are subject to change without prior notice. Drawings shown herein are not to scale. Square footages and dimensions are approximate, and individual units may vary. Square footages taken from architectural plans. No reproductions or other use of these plans may be made without the express written consent of the seller. Exterior wall conditions vary – see overall plans.

Standard Partial Unfinished Basement
 960 Square Feet



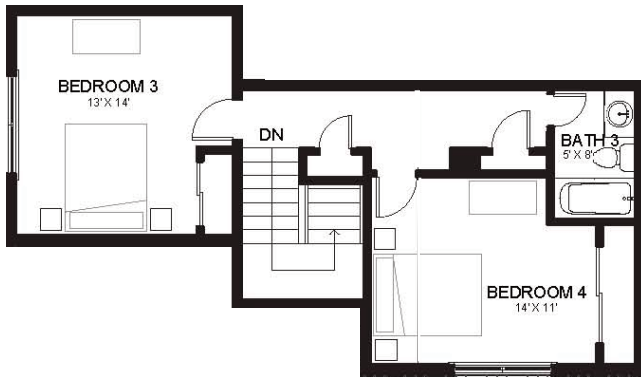
Partial Basement Finish Option
 960 Square Feet

Full Basement Finish Option
 1,527 Square Feet



Villa d'Este

Two story
 608 Square Feet



Third Bedroom main level option
 249 Square Feet

